

BTA Series of Rotary Tilt Buckets

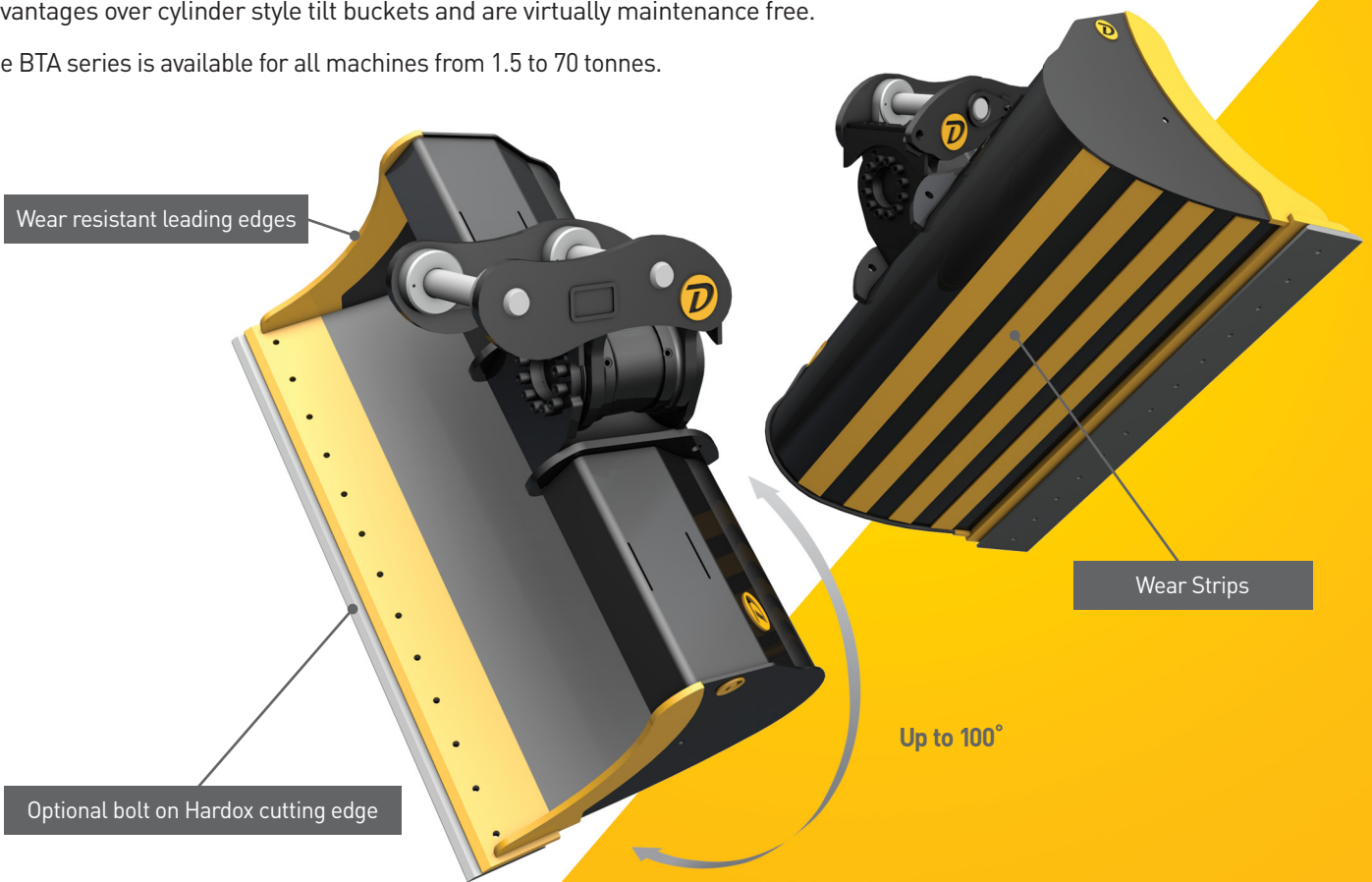
Maximum 'Uptime' - Minimum Maintenance Costs

The BTA series of Rotary Tilt Buckets are the ultimate shaping tool and are used by operators who understand the value of maximum "uptime" and minimal maintenance costs.

BTA Rotary Tilt Buckets have a unique profile with a compact tip radius which enables the bucket to cut through the ground more effectively with minimal resistance and drag. The self fill action gives an increased pay load. These combined benefits result in time and fuel savings.

With no cylinders, pins, bushes or grease nipples and only two moving parts the BTA range of tilt buckets offer superior advantages over cylinder style tilt buckets and are virtually maintenance free.

The BTA series is available for all machines from 1.5 to 70 tonnes.



The BTA range of buckets are manufactured from medium and high tensile steel which is wear resistant to optimise strength and weight. A wide selection of widths are available and wear strips are standard on all models above 5.5 tonne. A reversible bolt on cutting edge is optional. Custom built designs are also available on request.



BTA Series of Rotary Tilt Buckets

Doherty Power Actuator

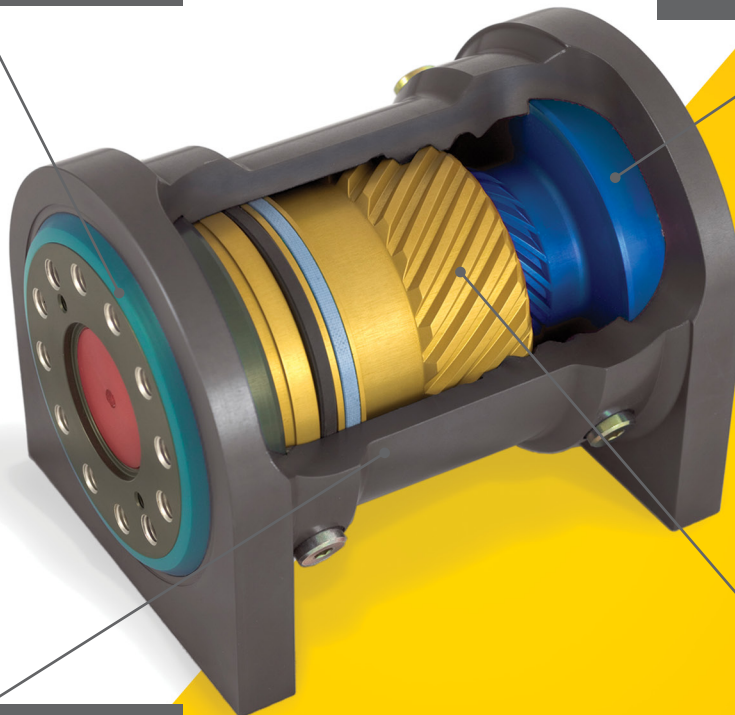
The Doherty Power Actuator ensures precise control of the bucket with no unwanted movement. Because the hydraulic connections are stationary, hose fit up is greatly simplified and the danger of hose damaged is minimised. The triple-sealed actuator is constantly lubricated with hydraulic oil, eliminating the need for daily greasing. The only regular maintenance is cleaning and lubricating the tertiary O ring end seals weekly which provides an additional level of sealing to ensure maximum service life.

Doherty Power Actuator at a Glance

- Slim structure
- Maintenance-free
- Multiple connection ports
- Simple assembly
- Triple sealed
- Specifically designed for excavator attachments
- Only two moving parts
- Integral relief valve
- 100 degree tilt angle

End flange design provides huge bearing surface and special dust/dirt seals

The helix shaft and end flange is precision machined from a single billet then surface hardened



The housing and mounts are precision machined and treated with a surface hardening and corrosion resistant process

The internal helix incorporates the piston and hydraulic seals